

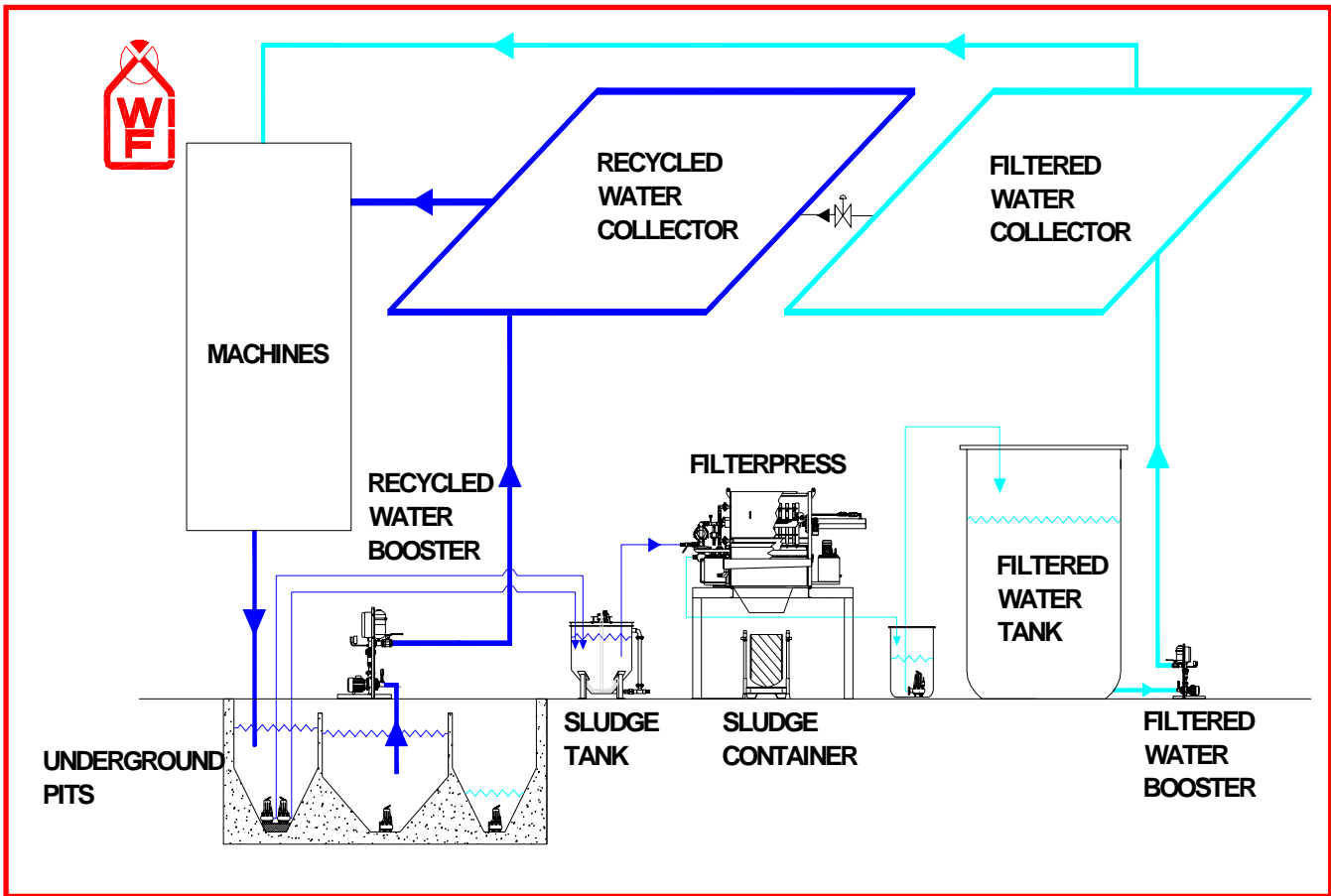


## WATER TREATMENT PLANTS FOR GLASS INDUSTRY



**NO "CHEMICAL PRODUCTS" USE**

## GLASS PLANT FLOW CHART



## ENVIRONMENT RESPECT

The Winkelmann Filtri water treatment systems for the recycling of water in the glass plants are designed for a fully automatic working condition to reduce the maintenance time. The systems are sized to clean all the necessary water for the machines installed at the customer's works. The Winkelmann Filtri systems are able to supply two different kind of water:

- Good recycled water necessary for the working conditions of double and straight Ending Grinding, Bevelling, glass Drilling, Washing & Drying Machines, CNC working Centers and other machines.
- Clear water necessary for the liquid cooling system of the CNC work Center spindles and other machine's sections.

The technical capabilities of the Winkelmann Filtri systems are the following:

- **To supply a constant recycled water flow** to the installed machines;
- **to supply a good quality water flow to the CNC** working Centers and other sections of the installed Machines, as requested by the customers;
- **to clean the water courses, pipes and water tanks** by removing continuously the glass dust deposits;
- **to facilitate and save the sludge disposal** by dewatering process;
- **to avoid the use of chemical products;**
- **to reduce water consumption;**
- **to clean, off line, the recycled water collector**, watercourses and pipes;
- **to filter, off line, the recycled water in the system** by using the filterpress to have the clean water available at the system re-starting.

## THE PROBLEMS.....



**DIRTY WATER**



**FULLY OBSTRUCTED  
TANK**



**PITS FREQUENT CLEANING**

## THE SOLUTION: WINKELMANN FILTRI RECYCLED WATER SYSTEM



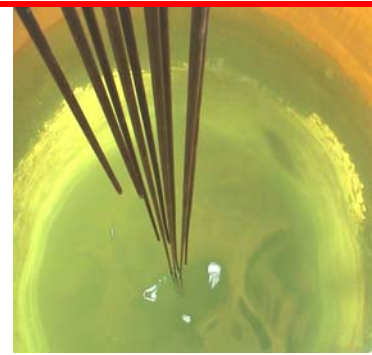
## THE RESULTS



**ALWAYS CLEANED PITS  
AND GOOD QUALITY WATER**



**DRIED SLUDGE**



**FILTERED WATER  
GOOD QUALITY**

# PLANTS' EXAMPLES



## MAR 80 PLANT

System suitable for medium/big glass industry.

### TECHNICAL DATA:

Recycled water capacity: 140 m<sup>3</sup>/h

Filtered water capacity: as requested by customer

Electric Power (without pumping system): 20 kW

Filtered water tank volume: 25 m<sup>3</sup>

Automatic cloths washing system



## MAR 47 PLANT

System suitable for medium/small glass industry.

### TECHNICAL DATA:

Recycled water capacity: 40 m<sup>3</sup>/h

Filtered water capacity: as requested by customer

Electric Power (without pumping system): 14 kW

Filtered water tank volume: 1 m<sup>3</sup>

Automatic cloths washing system



## MAR 25 PLANT

System suitable for small glass industry.

### TECHNICAL DATA:

Recycled water capacity: 10 m<sup>3</sup>/h

Electric Power (without pumping system): 2 kW

Winkelmann Filtri reserves the right to modify construction details with the intent of improving features or performances without formal advice. Therefore any data given on the catalogue has only an indicative value.



Via B. Cellini 20/22, 20020 Solaro (MI) - Italy

Tel: 0039 02 964 76608

Fax: 0039 02 964 76226

E-mail: [com@winkfilt.it](mailto:com@winkfilt.it)